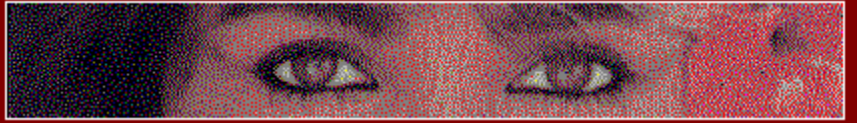


SELECT EXIT FROM THE FILE MENU TO QUIT



Please Read This Entire Document Before Proceeding

NEW FEATURES OF GRAPHIC WORKSHOP

**If you'd like to see this file again in the future, click on the What's New icon.
Complete documentation for Graphic Workshop can be found by double clicking on the GWS
Documentation icon.**

RELEASE 1.1t

This release of Graphic Workshop for Windows includes the following new features and updates:

- Graphic Workshop now features the extraordinary Pegasus JPEG libraries. This has reduced the read and write times for JPEG images and improved the image quality for JPEG-compressed files. See GWS Documentation for more about Pegasus.
- Improved the Print function to get around still more Deskjet problems and generally clean up the print function. There's a Centre Printed Images option available too.
- Added a Move and Copy Files function to the main window. This includes optional CRC checking to reduce the likelihood of incorrectly copied files to something less than the odds of winning a state-run lottery -- that is, very nearly impossible.
- Improved the PNG support. Please consider converting your GIF files to PNG... it will save you some disk space and help free the high seas of pirates.
- Added MPEG support. Note that you must have Windows 95, Windows NT or WIN32 installed in Windows 3.1 for the MPEG functions of Graphic Workshop to run. This is somewhat preliminary MPEG, with more to come in the next release.

- Added long file name support for Windows 95 users -- both of 'em.
- Improved the uudecoder -- Graphic Workshop will now prompt you for the sections of multiple-part uuencoded graphics.
- Plus several performance enhancements...

There have been numerous other minor changes to this version of Graphic Workshop... as well as a few bug fixes. Please consult the GWS Documentation file for a more complete list of them.

NOTE: We have changed the names of some of the DLL files that accompany the sixteen-bit version of Graphic Workshop. If you have an earlier sixteen-bit version of Graphic Workshop installed on your system, you can delete the old DLL files to free up some disk space. Specifically, you can delete THNL.DLL, STAT.DLL, SPIN.DLL, GIF.DLL and PNG.DLL. They have been replaced by THNL16.DLL, STAT16.DLL, SPIN16.DLL, GIF16.DLL and PNG16.DLL.

THE UNISYS GIF TAX

The new PNG file format exists to a large extent because of the Unisys GIF Tax. Unisys is a large computer company which holds a patent on the LZW compression algorithm that GIF and LZW TIFF files are based on. While the patent was issued in 1985, Unisys appears to have kept its existence quiet until fairly recently — until GIF was widely in use — and then demanded royalties from software developers who have implemented GIF or LZW TIFF in their applications.

This will not affect your use of Graphic Workshop for Windows or of GIF and LZW TIFF files — the tax is on software that reads and writes these files, not the files themselves. Specifically, at such time as you register Graphic Workshop for Windows or any other shareware application which reads or writes GIF or LZW TIFF files, the manufacturer of the software — us, in this case — is obliged to pay Unisys its royalty.

Unisys makes banking systems, network servers, PCs and other sorts of business hardware. If you are in a position to purchase or advise on the purchase of the sorts of products Unisys sells, we suggest that you consider using another supplier. If you wish to contact Unisys to hear their side of this, we recommend that you contact Unisys' corporate council:

Mark Starr
Unisys Corporation
P.O. Box 500
Blue Bell, PA
19424-0001

You can contact him by telephone at 1-215-986-4411, and by FAX at 1-215-986-5721 as well.

We also urge you to convert your GIF and LZW TIFF files to PNG. Aside from helping to make GIF go away, it will save you some space.

NOTE: As of this writing, it's our understanding that if you bundle shareware which will read or write GIF or LZW TIFF files with a commercial, for-profit product, Unisys may demand a royalty from you based on the price of your product. Should you wish to include Graphic Workshop for Windows with a book, CD-ROM or other commercial entity, please contact us about an LZW-free version of this package.